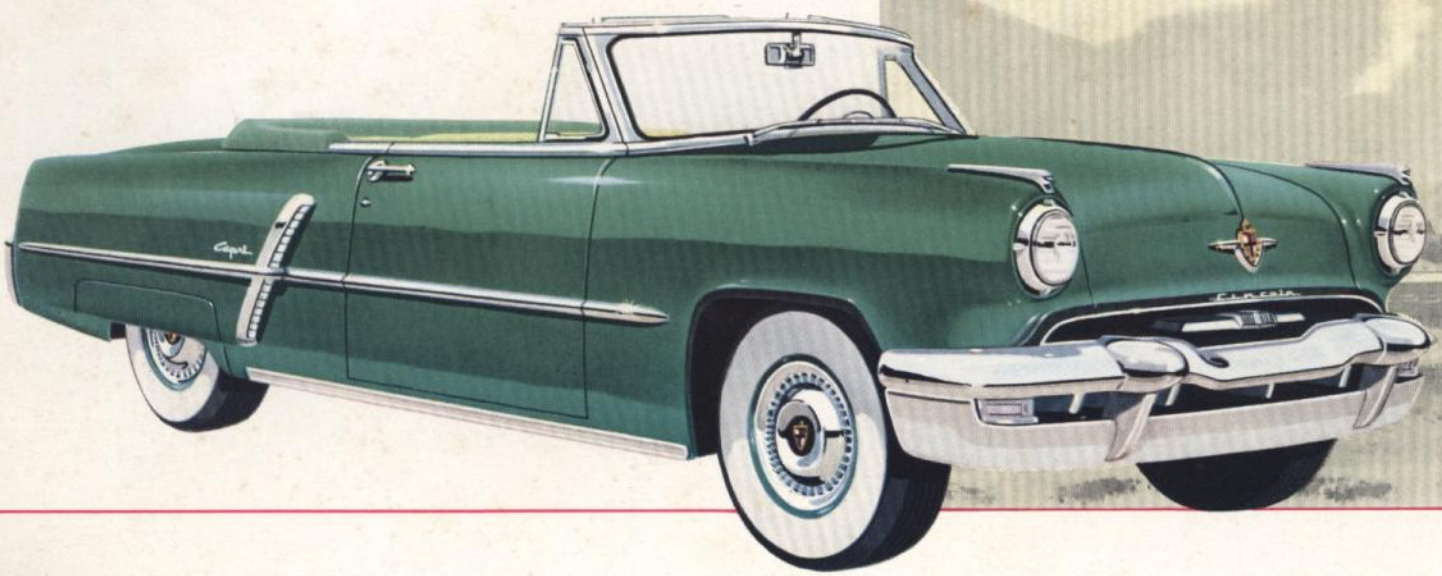
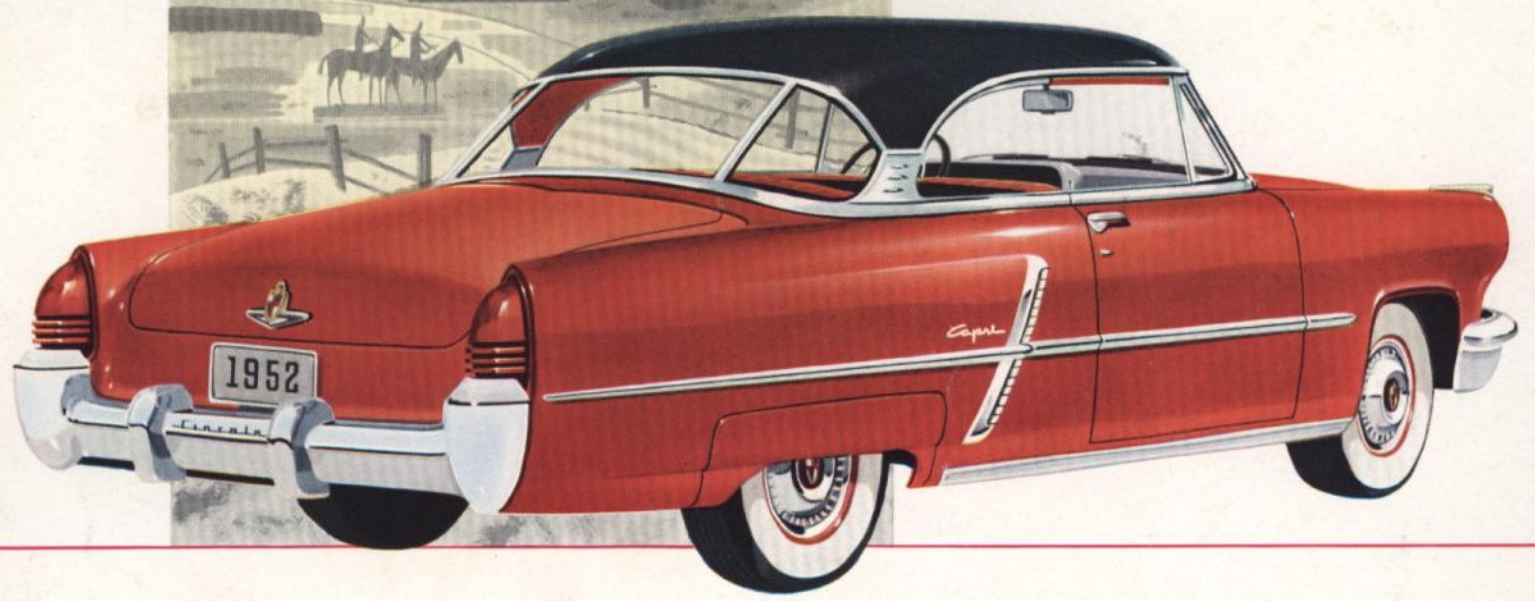
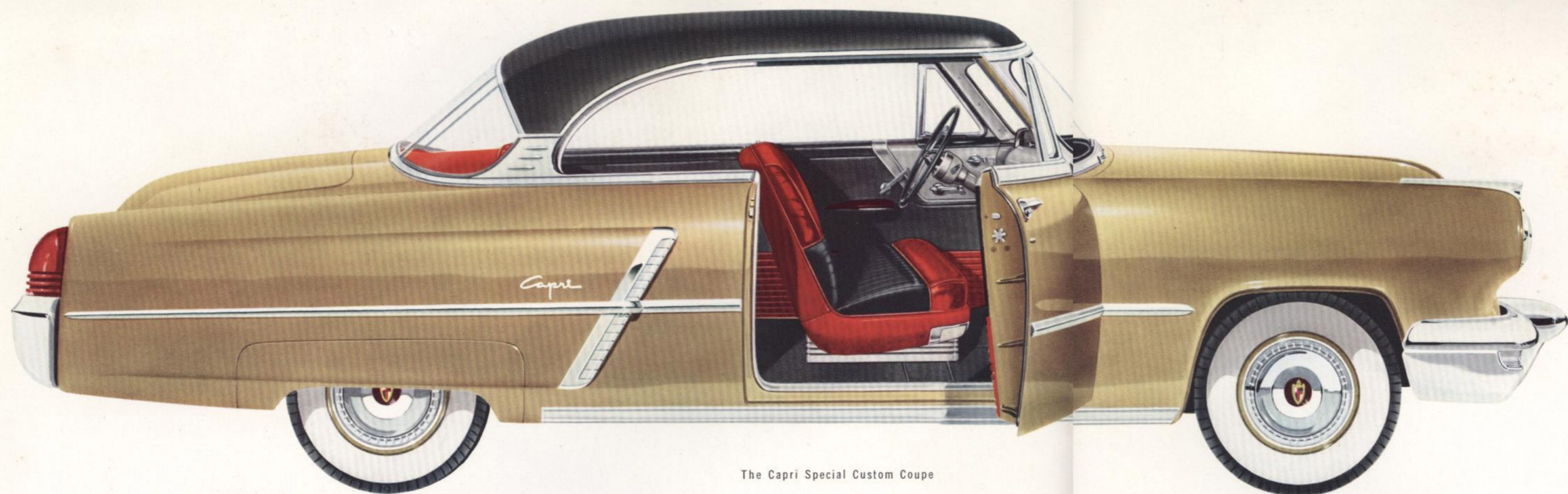


for 1952

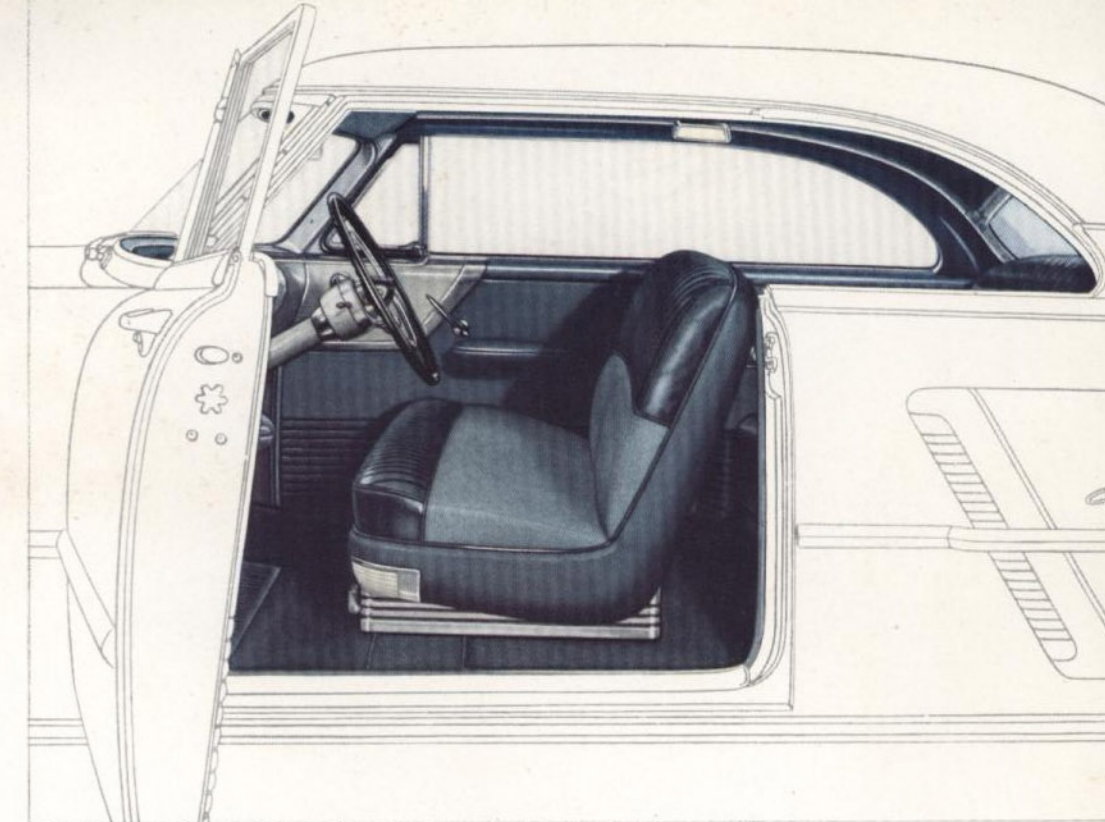
LINCOLN CAPRI



newly created for today's new living



The Capri Special Custom Coupe



In every way the interior of the Capri Special Custom Coupe is a fresh, inspiring new motoring creation—combining the appeal of the convertible with the protective features of a superb sedan. Soft textured fabrics, with seat bolsters in soft leather of contrasting colors, provide a rich, yet smartly informal atmosphere. Automatically operated windows and front seat adjustment are optional equipment on all 1952 Lincoln models at extra cost.

The Capri Special Custom Convertible

The Capri Special Custom Convertible, as befits a car so suited to the out-of-doors spirit in living, is available in a wide range of harmonizing all-leather interiors—featuring pleated bolsters and forward seat edges. Similar interiors are available in the convertible-inspired, steel-topped Capri Special Custom Coupe, shown above, as optional equipment at extra cost.



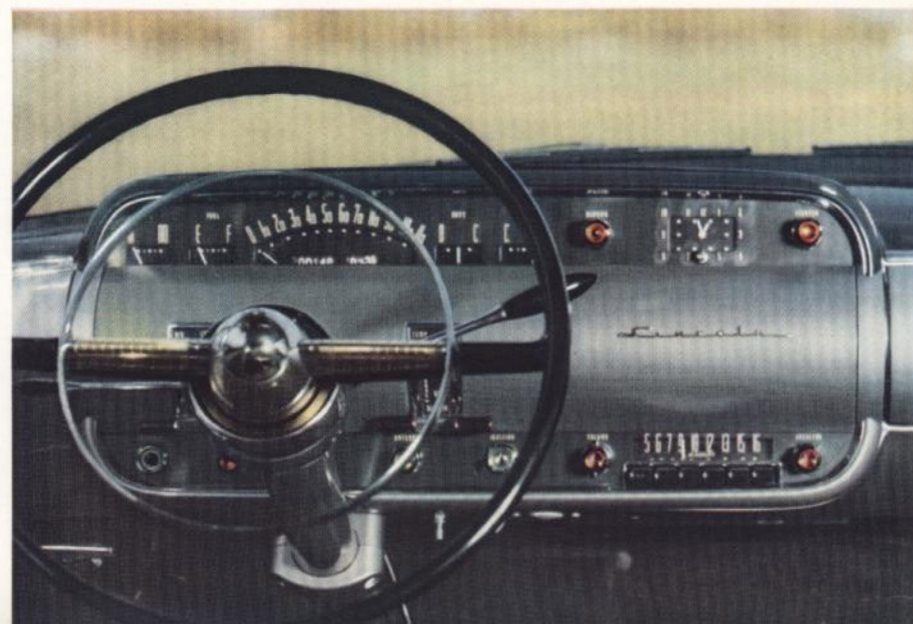
LUXURY— WITH A MODERN OUTLOOK

Contemporary as the indoor-outdoor living that gives so much extra zest to life today, is the new Lincoln Capri series—a Special Custom Coupe, Special Custom Four-door Sedan, and Special Custom Convertible.

In the superb new Capri Special Custom Coupe—equipped with a solid steel top—eyes will admire the debonair grace of its convertible styling.

In the Capri Special Custom Convertible, you will find an unusually satisfying treatment of long, low lines combined with a luxurious passenger compartment—including an electrically operated top. As on all 1952 Lincoln models, automatic window and seat adjustment controls are optional equipment, singly or in combination, available at extra cost.

Lincoln stylists used engineering sense in creating a modern steering wheel and instrument panel design to achieve a dual function. Not only are the lines, placement, and coloring of these vital elements harmoniously combined, they're functionally planned for most convenient use, too!



The steel-roofed Capri Special Custom Coupe offers the distinction of wide, deep windows which may be lowered completely with no center pillar to obstruct the view from windshield clear back to the curving rear roof line. And the Capri Special Custom Four-door Sedan brings the restful lines of both coupe and convertible to this popular family model.

In all three models, you may select from a variety of interior trims—ranging from a combination of choice fabrics with soft leathers in the Capri Special Custom Coupe to a completely pleated, all-leather interior in harmonizing contrasting tones in the striking Capri Special Custom Convertible.



The Capri Special Custom Four-door Sedan

HIGHLIGHTS

of the

Lincoln Capri

Most responsive fine car you've ever handled—that's Lincoln for 1952! Most responsive on the road because of Lincoln's new 160-hp overhead valve, V-eight engine. You'll get the full thrill of a new kind of performance the first time you press the accelerator . . . *with more power than you may ever need.*

Most eye-compelling styling on the road—inside and out. You'll delight at the custom luxury of new salon-spaced interiors. And you'll feel the thrill of owning a style-right car every time you drive. For this new air-stream styling has that low, dynamic appeal that turns all eyes . . .

Most easy-to-handle big cars you've ever driven, 1952 Lincolns feature a host of steering and handling features. New Ball-Joint front suspension, used for the first time on an American production car, gives greater handling ease; safer, more stable steering. And Lincoln's big-car compactness makes for easy parking. Superb on-the-road-poise makes Lincoln a restful car to drive.

New chassis, new steering, and new coordinated springing all combine to give a down-to-earth, road-hugging feel. At any speed, you'll find a new note in road-handling stability—cushioned springing, controlled riding action. You're master of the car on any road surface!

New standard for safety results from new panorama window visibility—front, sides, and rear . . . from new scientifically determined instrument and control arrangement—housed in a smart new "flight deck" panel frame. And in Lincoln for 1952 you get larger 4-wheel hydraulic brakes, controlled by an aircraft-type pendant pedal—for more responsive action and greater front compartment foot room! Brake cylinder moved to cleaner, more serviceable position on dash panel wall.

All Lincoln cars available with automatic electric window lifts and automatic electric front seat adjustment at extra cost. White side-wall tires, when available, also supplied at extra cost.

LINCOLN DIVISION OF THE FORD MOTOR COMPANY, DETROIT, MICHIGAN, WHOSE POLICY IS ONE OF CONTINUOUS IMPROVEMENT, RESERVES THE RIGHT TO DISCONTINUE OR CHANGE AT ANY TIME, SPECIFICATIONS, DESIGN, OR PRICES WITHOUT NOTICE AND WITHOUT INCURRING ANY OBLIGATION.

Yours in a range of smart colors and fabulous fabric combinations



The Capri Special Custom Coupe

Capri Models have been especially styled to make the most of a new wider range of unique new body colors. Top, window, and bright trim areas have been "decorator-balanced" to give these new colors a more dynamic role in over-all smartness and eye-winning appeal.

Because the Lincoln Capri series was designed with color in mind, you can select from a wide range of fresh and different inside-and-out two-tone combinations—more individually appealing and distinctive, and superbly successful, than you've ever enjoyed before!